

USB DRIVER INSTALLATION GUIDE

Use these instructions to install the USB and Microsoft® ActiveSync® synchronization software for your printer and computer to communicate. These instructions are written for Microsoft® Windows® 2000/XP. You must have a USB port and the proper cable to connect the printer to your computer.

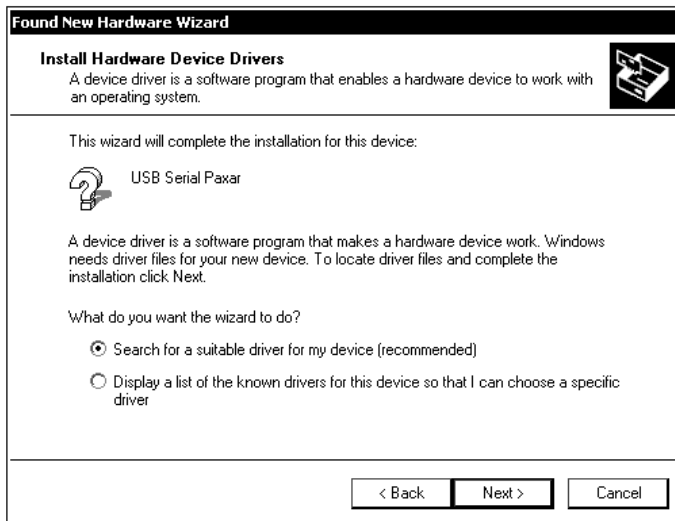
The USB driver is on the Monarch® Handheld Software Package CD-ROM, which came with your printer. You will need ActiveSync to transfer files between your printer and computer. The ActiveSync software is available on the Microsoft® Web site (Microsoft.com) by searching on ActiveSync.

Installing the USB driver for Microsoft® Windows® 2000

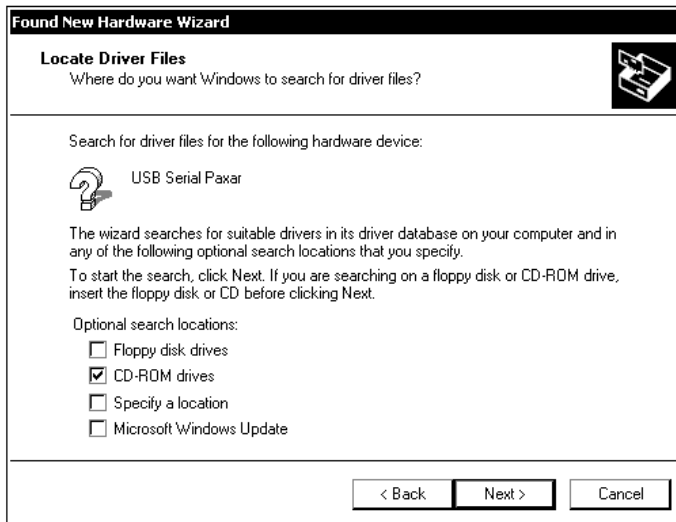
1. Attach the USB cable to your computer and printer.
2. Insert the CD-Rom in your CD-Rom drive.



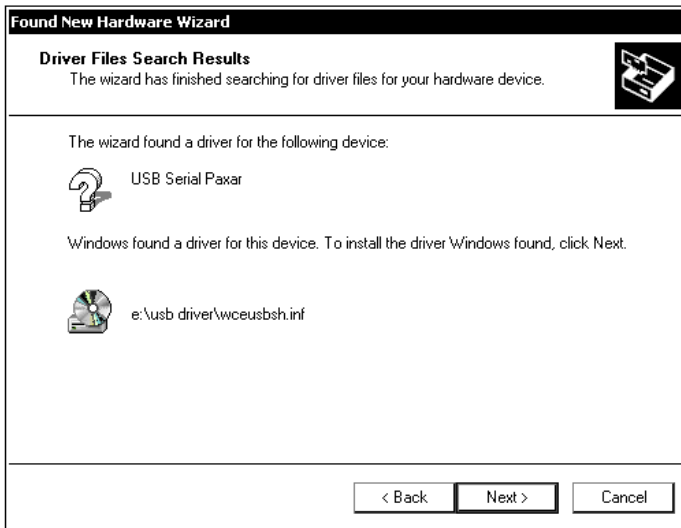
3. Turn on the printer. The computer automatically detects USB port and launches the Found New Hardware Wizard.
4. Click **Next**.



5. Select **Search for a suitable for a driver for my device (recommended)**. Click **Next**.



6. Select **CD-ROM drives**. Click **Next**.



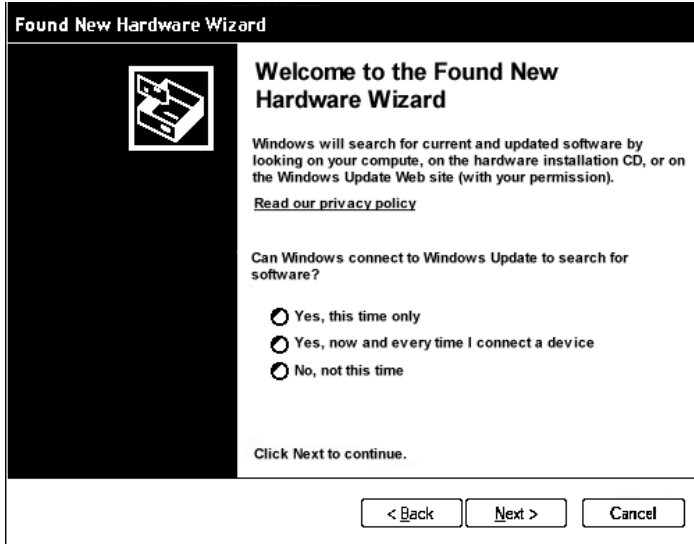
7. Click Next.



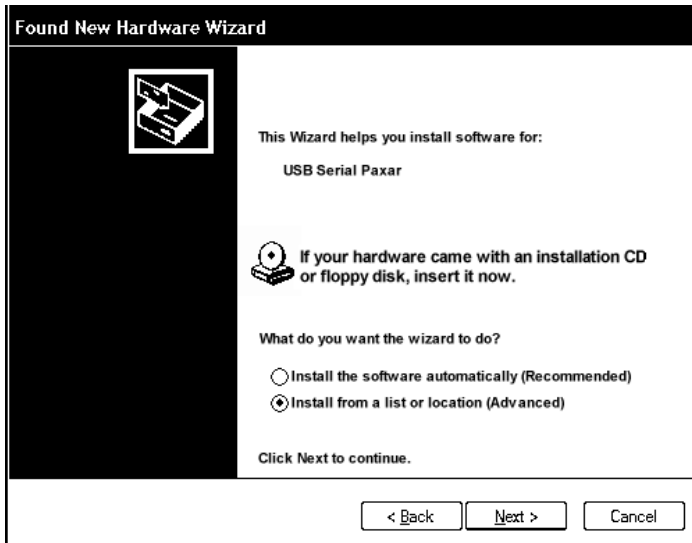
8. Click Finish.

Installing the USB driver for Microsoft® Windows® XP

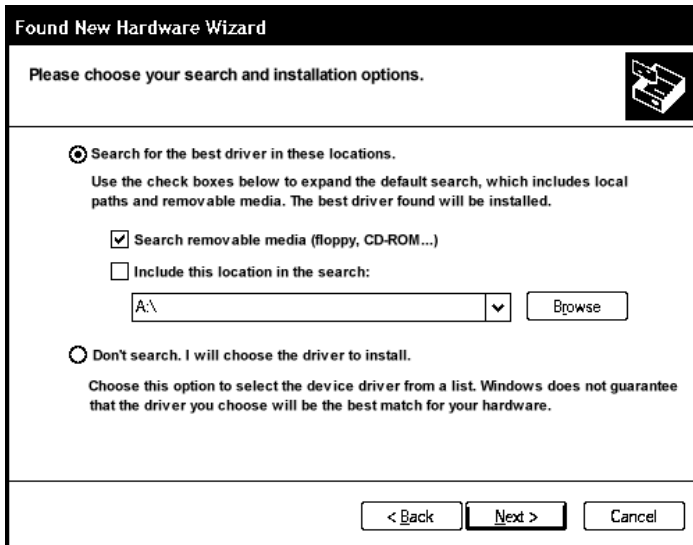
1. Attach the USB cable to your computer and printer.
2. Insert the CD-Rom in your CD-Rom drive.
3. Turn on the printer. The computer automatically detects USB port and launches the Found New Hardware Wizard.



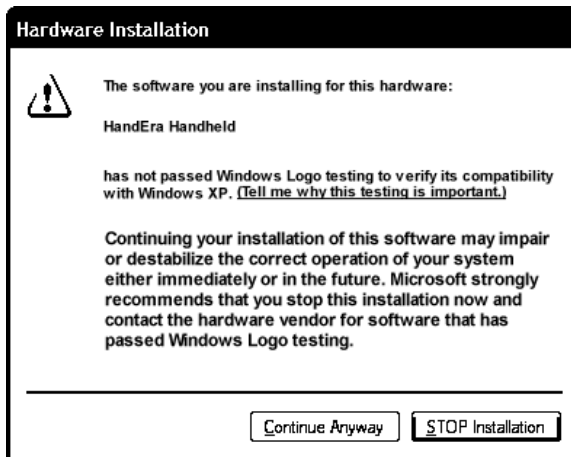
4. Select **No, not this time**, then click **Next**.



5. Select **Install from a list or specific location (advanced)**, then click **Next**.



6. Select only **Search removable media (floppy, CD-ROM)**, then click **Next** to continue through the installation by following the instructions on the screen.



7. Select **Continue Anyway**.

8. When the installation is complete, you see



9. Click **Finish**.

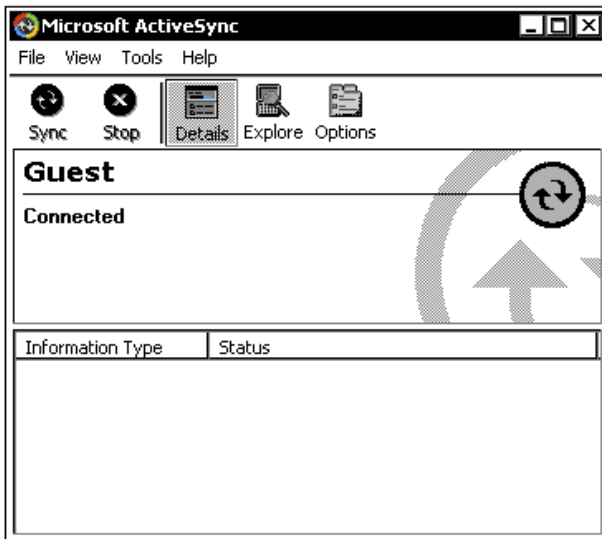
Installing Microsoft® ActiveSync® Synchronization Software

Download the ActiveSync synchronization software from the Microsoft.com Web site. Follow the download instructions on the site.

1. Select **Open** when prompted during download.



2. Click **Next**.



Transferring Files to the Printer

To transfer data files to the printer:

1. Open the folder with your data files on your computer.
2. Select the Mobile Device drive and open the folder for the data files on your printer.
3. Drag the file from your computer folder to your Mobile Device (printer) printer folder.

